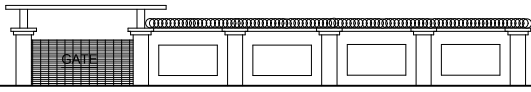
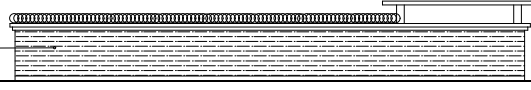


FLOOR PLAN
1:100



FRONT VIEW
1:200

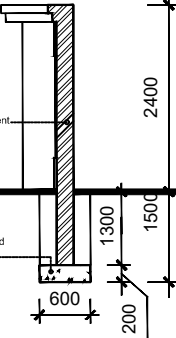


REAR VIEW
1:200

WALL FINISH
Plastered & Painted
with a rough finish

WALL
150mm thick concrete blockwork reinforced with
brickforce every third course on two sheets of
polythene dpc. Walls to receive sand/cement
plaster with PVA paint both sides approved by client

FOUNDATIONS
600mm x 200mm traditional reinforced
strip foundation to Engineer's detail



SECTION X-X
1:30

- TRAINING & LODGING FACILITY
- Gym
 - Lodge (50 Rooms)
 - Offices
 - Dining & Kitchen
 - Training Centre

KEY DIMENSIONS

- AB - 497.46M
- BC - 303.59M
- AC - 473.33M
- B-B - 117.92M
- C-C - 61.58M

KEY DIMENSIONS

- CONCRETE BLOCK WALL AB - 497.46M
- CONCRETE BLOCK WALL AC - 473.33M
- CLEAR-VU FENCING BC - 413.35M

CONSULTING ARCHITECT
SYDNEY NGOMA
AFRICA CDC PROJECT
ZNPHI, LUSAKA
ZAMBIA

PROJECT TITLE
PROPOSED BOUNDARY WALL DESIGN
ON STAND NO. Chongwi Ln. 73638/3
CHONGWI, LUSAKA PROVINCE

CLIENT
ZAMBIA NATIONAL PUBLIC HEALTH
INSTITUTE

DRAWING TITLE
MAIN SITE LAYOUT PLAN
& BOUNDARY WALL DETAILS

Scale	As Shown	Status
Date Started	AUG 2023	Self 15/08/2023
Drawn	SYDNEY NGOMA	Checked SYDNEY NGOMA
Drawing No.	2207-ZNPHI-001	

